

Cell75



Conference halls, waiting rooms, transit areas. A seat classed as comfortable has to accommodate users ergonomically and tastefully, becoming an essential and at the same time invisible support. Cell75 is the range of small armchairs and sofas, a simplified version of the Cell128 collection, ideal for contract and large reception areas. It is available with base or legs, in wood or steel finish.

Projects

Workplace 2015, Milano, Italia (2015)

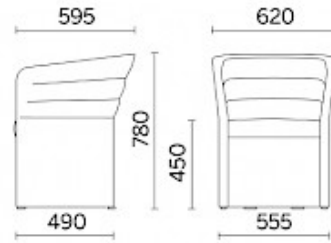
Dr Franz Schneider SA, Spagna, Spagna (2017)

Salone Internazionale del Mobile di Milano 2018, Milano, Italia (2018)

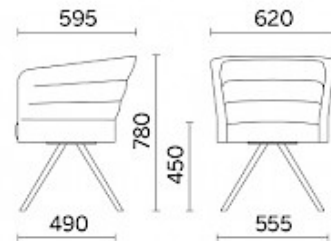
Sitland chez Gabriel, Parigi, Francia (2018)

Models

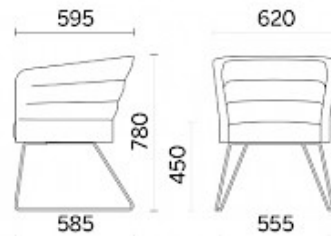
Single-seater
with floor-
standing
base



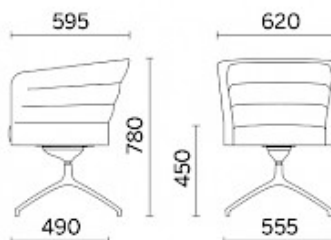
Single-seater
with 4 legs



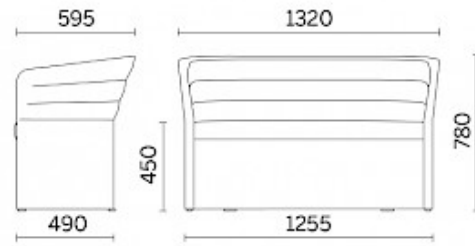
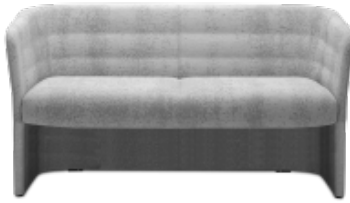
Single-seater
with steel
sled-base



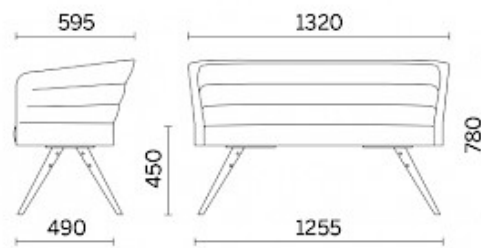
Single-seater
with "Comfort
plus" system,
swivel four-
spoke base
in aluminium



Two-seater
with floor-
standing
base

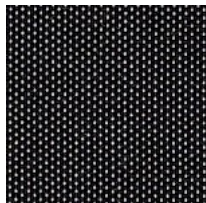


Two-seater
with fixed
base and 4
legs in wood

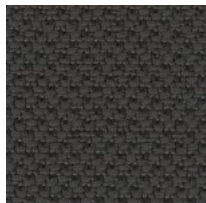


Materials and colours

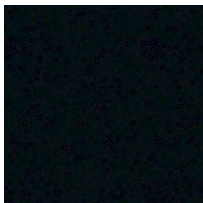
Upholstery



Fabric BA | Basel
Available colours 10



Fabric AL | Alba
Available colours 9



Fabric SY | Sinergy
Available colours 11



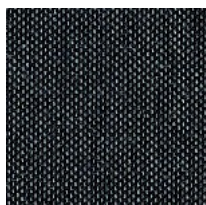
Fabric ST | Step
Available colours 12



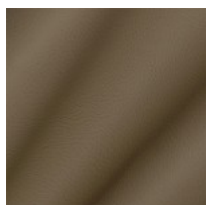
Fabric MY | Memory 2
Available colours 8



Fabric ME
Available colours 13



Fabric CL | Clara 2
Available colours 10



Faux leather Cl
Available colours 3

Questo prodotto è garantito 5 anni. Sitland Spa si riserva di apportare modifiche e/o migliorie di carattere tecnico ed estetico ai propri modelli e prodotti in qualsiasi momento e senza preavviso. Le foto e i colori visualizzati sono puramente indicativi e possono variare rispetto alla realtà. Per maggiori informazioni si prega di contattare il nostro Servizio Clienti service@sitland.com