

## Unimesh



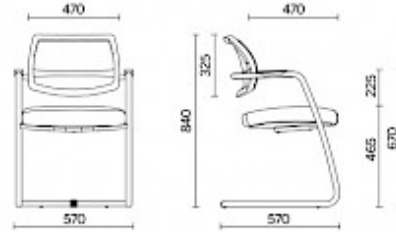
Designed for public and work environments and featuring extremely lightweight volumes and lines, Unimesh is the ideal seat for guests in meeting rooms and training rooms. The sled structure in high-strength tubular steel with integrated armrests supports the ergonomic back covered in highly breathable mesh and the shape-retaining padded seat with Comfort-Air technology.

### Projects

**NRS Media**, Londra, Regno Unito (2012)

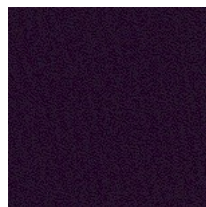
## Models

Sled  
base  
visitor  
chair



## Materials and colours

### Seat Upholstery



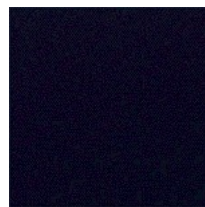
Fabric AB  
Available colours 13



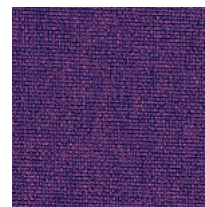
Fabric AL | Alba  
Available colours 9



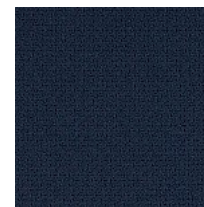
Fabric BN  
Available colours 10



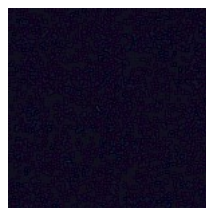
Fabric IP  
Available colours 13



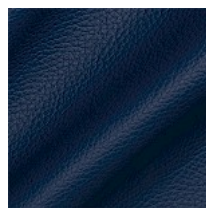
Fabric ME  
Available colours 13



Fabric ST | Step  
Available colours 12



Fabric SY | Sinergy  
Available colours 11

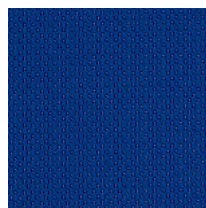


Faux leather N  
Available colours 13

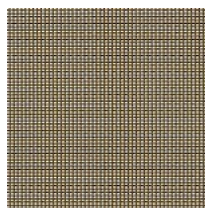
### Back Upholstery



Mesh RY | Rhythm  
Available colours 5



Mesh RR  
Available colours 10



Mesh RP  
Available colours 6



Mesh RF  
Available colours 5

**Questo prodotto è garantito 5 anni.** Sitland Spa si riserva di apportare modifiche e/o migliorie di carattere tecnico ed estetico ai propri modelli e prodotti in qualsiasi momento e senza preavviso. Le foto e i colori visualizzati sono puramente indicativi e possono variare rispetto alla realtà. Per maggiori informazioni si prega di contattare il nostro Servizio Clienti [service@sitland.com](mailto:service@sitland.com)